

IBC for liquids - type IBCz

Non-polluting reusable container made of stainless steel

- Application:**
- transport, production and stocking of raw materials and products of chemistry-, paint-, plastics- and food industry.
-
- Nominal Capacity:**
- 500 - 1.250 litres
-
- Design:**
- Material
 - Tank: stainless steel 1.4301 (AISI304) 2B or 2R
 - alternatively 1.4404 (AISI316L) 2B
 - 1.4571 (AISI316Ti) 2B
 - Other materials upon request
 - Frame: steel, hot-dip galvanized according to EN ISO 1461
option: stainless steel 1.4301 2B
 - Top head: manhole nozzle DN 400 and DN 457 respectively with clamping- or screw cover lid, gasket upon request 1" nozzle with pressure relief device type UH/D2 or pre/vec valve
Further fittings upon request
 - Bottom/Outlet: pressed, excentrical bottom outlet with butterfly valve or ball valve
With standard couplings camlock/tanker coupling systems upon request
 - Frame: 4 fork lift tunnels
4 crane hooks on the top of the stacking frame



- Handling:**
- transportable by any standard pallet-/forklift truck
 - craneable
 - 3-fold stackable
 - option: skids for conveyor belt transport

Advantages: (see backside with photos)

- cavity free shaped outlet for optimized cleaning
- complete discharge without residue
- bottom with pipeless flanged outlet armature
- fork-lift-tunnels for safe forklift transport
- 4 diagonal feet ensure optimized spread of tank weight
- positively force transmission between tank and feet prevent slipping of tank within the frame (e. g. while cleaning or stirring application)

- Working pressures:**
- max. working pressure up to 0,5 bar
 - option with screw cover : up to 1,0 bar according to DRGL 97/23 EG CE-marked

- Approval:**
- as metal IBC according to ADR, RID and IMDG- code Chapter 6.5 for the transport of hazardous liquids of packaging group II and III
 - according to DOT
 - acc to german TRbF 20 as collecting or removal tank acc. to german TRbF 20

Technical data:

Type	Volume	max. outside dimensions			max. weight	max. density
	Litres	Width	Length	Height	kg	kg/l
IBCz 500	500	1100	1200	1100	225	4,00
IBCz 800	800	1100	1200	1440	255	2,80
IBCz 1000	1000	1100	1200	1660	275	2,80
IBCz 1100	1100	1100	1200	1795	285	1,84
IBCz 1250	1250	1100	1200	1950	300	1,64

Options and capacities on request



Yes, gevonden!
CONSENSYS biedt de oplossingen voor ons!
Bel jij met een aanvraag?

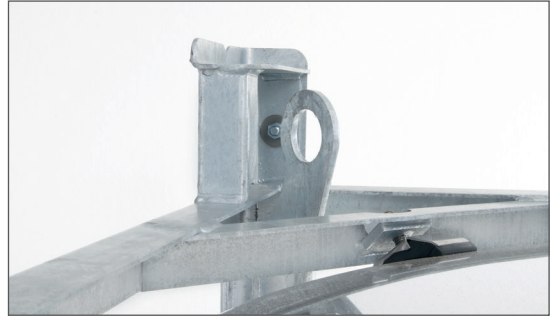
>> Gerard Noordhof
op +31 6 3039 2646

IBC for liquids - type IBCz

Robust transport frame, protection for the tank

Welded on crane loops on the frame stilts for safe crane transport

Rubber pads on the frame for decoupling between tank and transport frame



Hinged screw cover DN 400 / DN 457

6 swing bolts with wing nuts

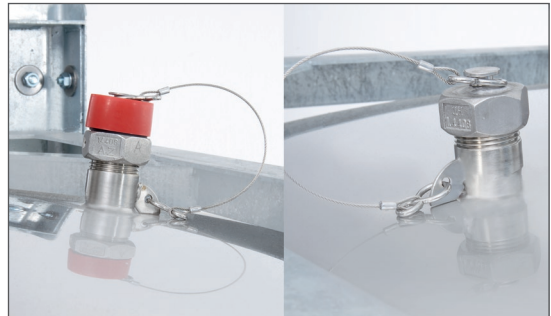
Available manhole lid gaskets:

- PE
- EPDM; PTFE covered EPDM
- Viton
- NBR
- Silicone

Pressure relief device type UH/D2

(latest opening at 0.65 bar)

Option: additional nozzle with screw cap



Gravity discharge without residues and easy cleaning design by cavity free pressed bottom and pipeless flanged outlet armature

4-way fork-lift-tunnels for safe transport

Angular pointed feet assure equal transfer of the filled container on the frame

Option: lid with integrated stirring shaft

